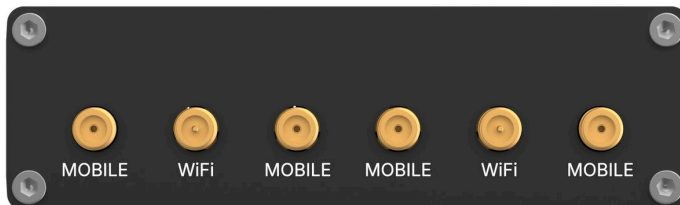


RUTM30

Quick Start Guide



This Wiki page contains the online version of the **Quick Start Guide (QSG)** for the **RUTM30 5G Router**. Here you will find an overview of the various components on the front and back of a RUTM30 device, hardware installation instructions, first login information, device specifications, and general safety information. It is highly recommended to acquaint yourself with the Quick Start Guide before using the device. You can also locate a printed version of the Quick Start Guide in the packaging box of your device.

Auto-generated document from https://wiki.teltonika-networks.com/view/QSG_RUTM30 on 2026-06-15
 This PDF may contain rendering errors, missing images, or outdated information. Refer to the original wiki page for the authoritative version.

SAFETY INFORMATION

Before starting operating the device, please review recommendations and precautions to minimize the possibility of accidents. Safety precautions presented are supplementary and subject to the local safety regulations. When various operations are executed on the device, the user must fully follow the safety instructions and recommendations provided with the device.

GENERAL

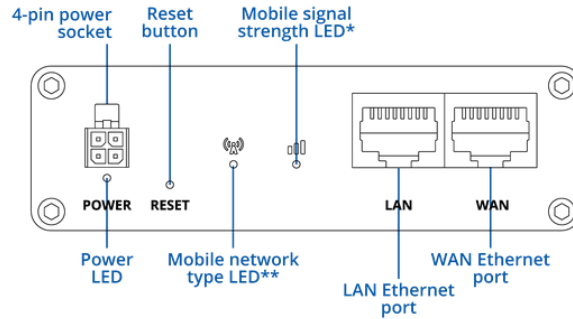
RADIO SPECIFICATIONS	
RF technologies	3G, 4G, 5G, WiFi
Max RF power	25dBm @3G, 28dBm @4G LTE, 28dBm @5G NR, 20 dBm@Wi-Fi 2.4G, 23 dBm@Wi-Fi 5G
Bundled accessories specifications*	
Power adapter	Input: 0.45A@100-240 VAC, Output: 12 VDC, 1.5A, 4-pin plug
Mobile antenna	617 ~ 960 / 1400 ~ 2690 / 3300 ~ 5900 MHz, 50 Ω , VSWR<3, gain \leq 4 dBi, omnidirectional, SMA male connector
WiFi antenna	2400 ~ 2500 MHz / 4950 ~ 5850 MHz, 50 Ω , VSWR<1.5, gain \leq 3 dBi, omnidirectional, RP-SMA male connector

* Order code dependant.

** Higher gain antenna can be connected to compensate for cable attenuation when a cable is used. The user is responsible for the compliance with the legal regulations.

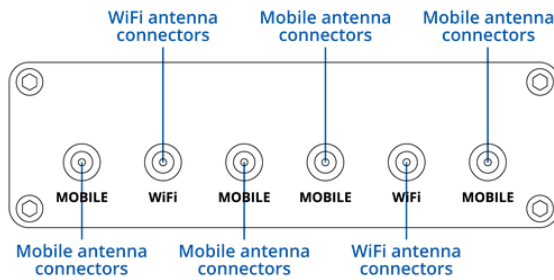
QUICK START GUIDE

FRONT VIEW



Mobile signal strength LED*	RED color when signal RSSI is between -110 and -82 dBm YELLOW color when signal RSSI is between -81 and -52 dBm GREEN color when signal RSSI is more than -51 dBm
Mobile network type LED**	YELLOW color when the device is connected to a 3G network GREEN color when the device is connected to a 4G network BLUE color when the device is connected to a 5G network

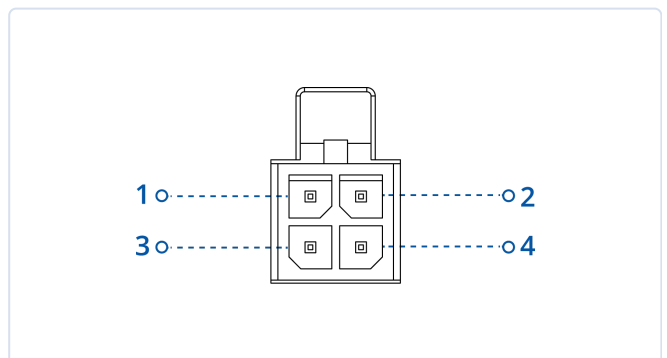
BACK VIEW



CONNECTORS

POWER SOCKET PINOUT

NO.	DESCRIPTION	WIRE COLOR
1	Power	Red
2	Ground	Black
3	I/O	Green
4	I/O	White



QUICK START GUIDE FOR ESIM BOOTSTRAP



The eSIM Bootstrap guide explains how devices with built-in eSIMs use a temporary 10 MB Bootstrap profile to establish limited connectivity and download the full operational eSIM profile. The Bootstrap profile activates automatically or can be enabled manually via the WebUI or RMS, and it remains valid for one year from manufacture. Once the full eSIM profile is downloaded and activated, the Bootstrap profile is removed.

INFORMATION

The device with eSIM ordering code includes a preinstalled **10 MB Bootstrap eSIM profile** with limited connectivity sufficient for downloading your provider's eSIM profile and not for general Internet use.

i To learn about Bootstrap, read the [eSIM Bootstrap guide](#). For advanced eSIM setup, see the [eSIM configuration page](#). For RMS-specific steps, follow [How to configure eSIM profiles in RMS](#).

DEVICE OPERATIONS WITH ESIM BOOTSTRAP

- On first start, the device runs normally — eSIM Bootstrap profile is inactive. Device automatically switches to eSIM Bootstrap profile after 1 hour.
- To start immediately, set default SIM to eSIM, and that will set eSIM Bootstrap profile as the primary SIM.
- When eSIM Bootstrap profile is active, mobile service becomes available. Download your full eSIM profile within 15 minutes; afterwards, Bootstrap profile will disable itself to conserve data.
- After the new eSIM profile is downloaded, the temporary Bootstrap eSIM profile, and all related configurations are removed, and the new eSIM becomes the primary SIM.
- The bootstrap profile only allows specific traffic such as RMS, [DNS](#), and [DHCP](#), while blocking everything else. Also, if no physical SIM card is detected within the first hour, the router automatically switches to the bootstrap profile to establish connectivity until a network operator profile is downloaded. Once the new profile is active, the system returns to its usual operation.

Note: *The Bootstrap profile is valid for 1 year from the device's manufacturing date; after it expires, activate the eSIM via the default procedure using Internet connection from other sources.*

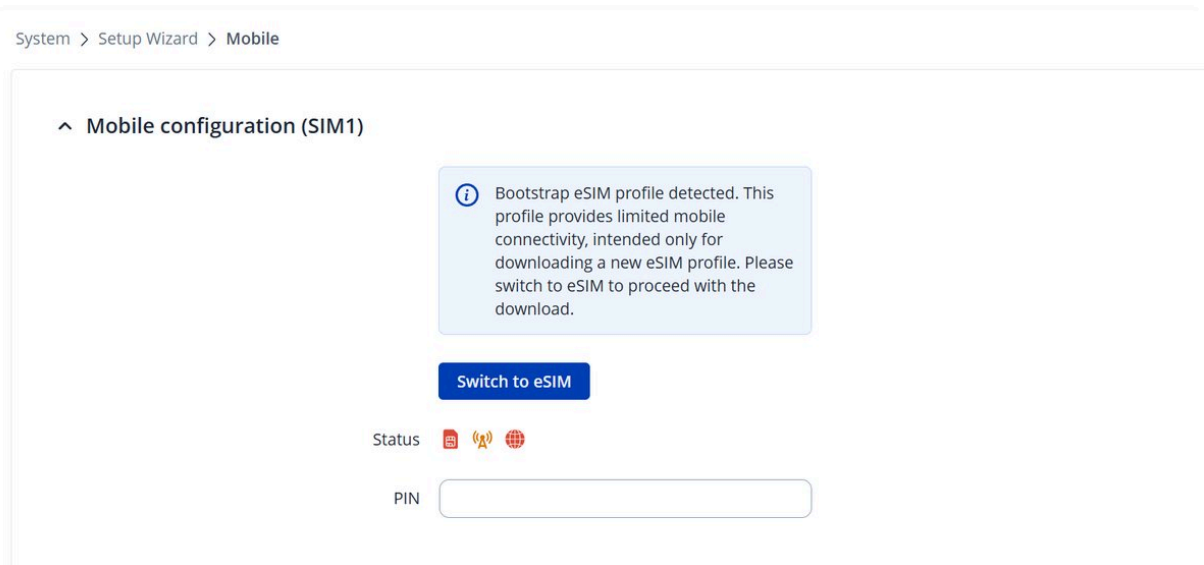
BOOTSTRAP - ESIM SETUP GUIDE

After logging into device WebUI for the first time, you will be greeted by a Setup Wizard. On the third step of Mobile, you will get a notification about bootstrap eSIM profile being detected.

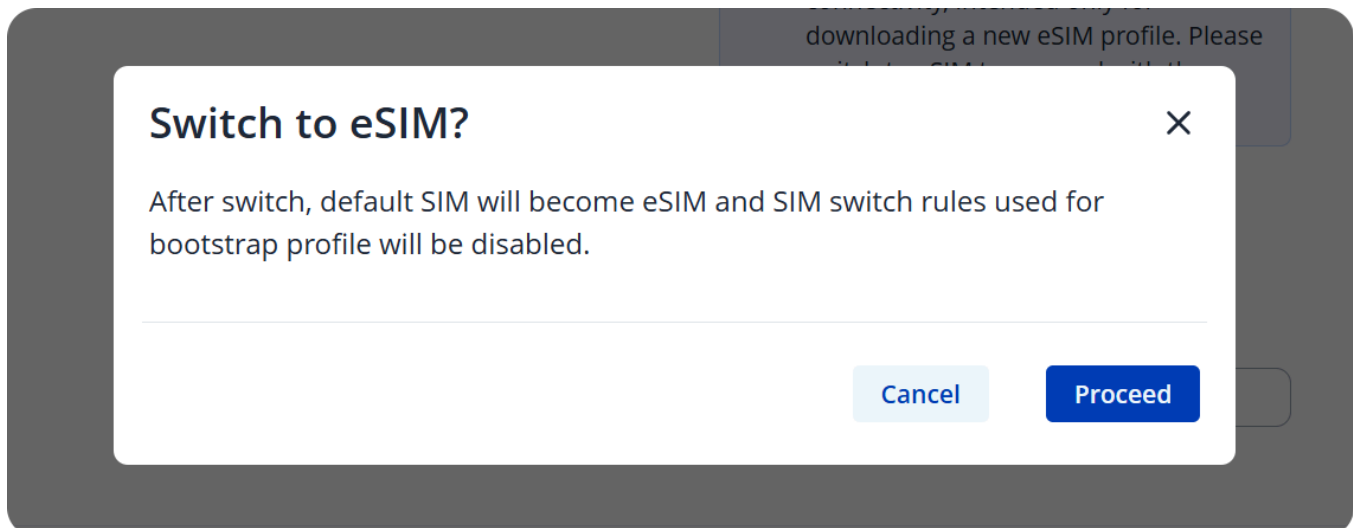
If you skipped the Setup Wizard, you navigate to **1. System** → **2. Setup Wizard** → **3. Mobile**.

SETUP WIZARD

Step 1 - Click **Switch to eSIM** button – to set default SIM to eSIM and to start the process



Step 2 - You will receive a confirmation message to switch to eSIM. The default SIM will be switched to an eSIM, and the SIM switch rules used for the Bootstrap profile will be disabled.



Step 3

- Enter the desired eSIM Name (optional)

- Enter the **Activation code** – provided by the eSIM provider

Step 4 - Once **Download** button is active press it to start the process

i Profile download may take a while, depending on the connection quality. Make sure that all the Mobile antennas are attached to your device at this point.

^ New eSIM profile configuration

Name

Activation code *

QR code [Browse](#) or drag and drop your file here

Confirmation code

[Download](#)

[Back](#) [Skip wizard](#) [Next](#)

SETUP COMPLETE

In a few moments, you will get a success message of eSIM profile added. The temporary eSIM Bootstrap was removed at this point of the setup.

System > Setup Wizard > Mobile

✓ eSIM profile added ×

^ Mobile configuration (SIM2, eSIM1)

Status

PIN

^ Interface mob1s2a1e1 APN configuration

Auto APN on

i Functional APN will be detected automatically.

[Back](#) [Skip wizard](#) [Next](#)

BOOTSTRAP VIDEO TUTORIAL

RMS ESIM BOOTSTRAP PROFILE SETUP GUIDE

1. Power on your device.
2. Add your currently offline [device to your RMS profile](#).
3. Follow the steps below add a new eSIM profile using RMS.
4. Device will automatically switch to eSIM Bootstrap profile and will download your new eSIM profile, it may take up to one 1 hour.

ADDING NEW ESIM PROFILE USING RMS

1. Select your eSIM compatible devices.
2. Open actions menu
3. Expand configuration submenu and click on **eSIM configuration**.
4. An eSIM configuration menu will open.
Manual - for manual eSIM profile management on single selected device only. From file - for configuring a list of eSIM profiles to single or multiple devices. Manual
Click **Add eSIM profile** to add new profile.

Input profile name. Input profile's activation code. Click **Add**.

New profile will show up in the list. Click **Add** to send this configuration to your device.

Action status window will pop-up. You will see if it was successful, alternatively you will see an error if it failed.

ESIM

The Mobile eSIM feature on RUTM30 eSIM devices allows users to manage eSIM profiles, configure settings, and use enhanced network capabilities. For more information please refer to the [RUTM30 eSIM manual](#).

- **eSIM Profiles** - You can easily add new eSIM profiles or configure existing ones. This section details profile management, including editing profile names and activation codes.
- **SIM Switch** - The SIM Switch provides you with the possibility to configure SIM switching rules, i.e., set up circumstances under which the device will perform a switch from using one SIM card to another.

- **Multiwan** - The Failover function allows you to backup your primary WAN connection in case it goes down.

^ eSIM profiles

1 Demo	State: Enabled	Provider: Global1 ICCID: 8988308650100308054F	Edit Delete
----------	----------------	--	---

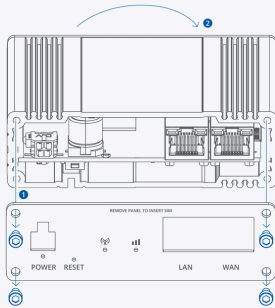
To learn more about all the eSIM feature and its settings, please refer to the [RUTM30 eSIM manual](#).

SIM CARD RECOMMENDATIONS

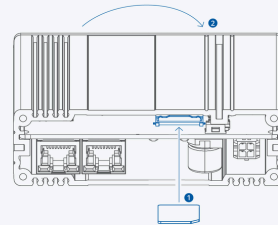
- Before installing the SIM cards, please apply a thin layer of dielectric grease to the SIM card contacts for devices used in environments with **high-vibration levels**. This will help avoid SIM cards losing touch with the SIM slot and prevent unexpected failures.
- Industrial Grade SIM cards are recommended for devices requiring a long lifespan used in environments with **extreme temperatures, corrosive** or **extra humid climates**, or hard-to-reach locations.

HARDWARE INSTALLATION

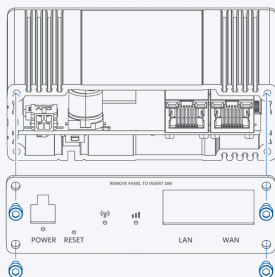
1. Unscrew the four hex bolts, remove the back panel and turn the device upside down.



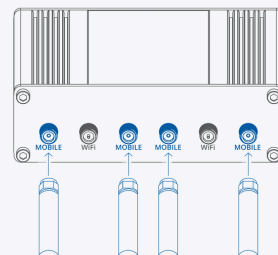
2. Insert your SIM card into the SIM socket and turn the device back upright.



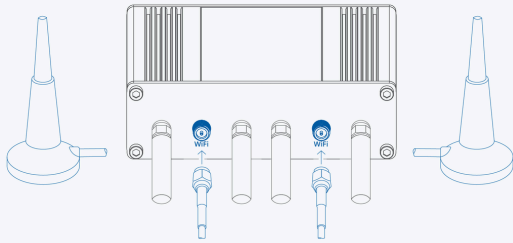
3. Re-attach the back panel and screw in the hex bolts.



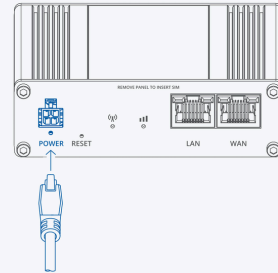
4. Attach the Mobile antennas to the connectors labeled "MOBILE".



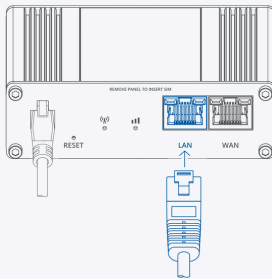
5. Attach both WiFi antennas to connectors labeled "Wifi".



6. Connect the 4-pin connector to the power socket on the front of the device. Then plug the power adapter into an electric outlet.

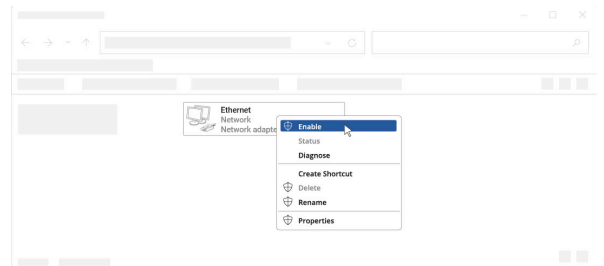


7. Connect to the device wirelessly using SSID and password provided on the device information label or use an Ethernet cable connected to a LAN port.

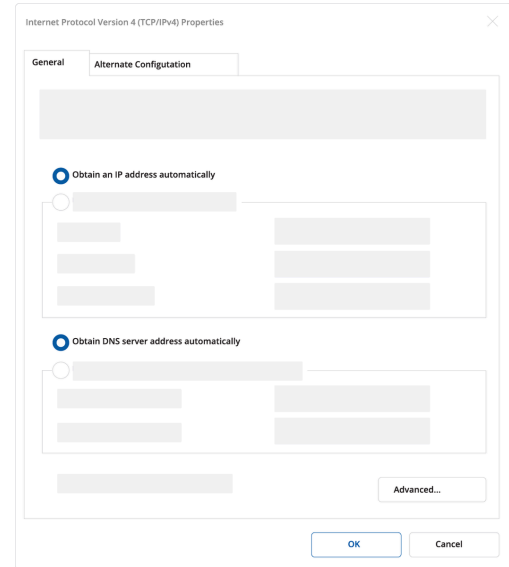


CONFIGURE YOUR COMPUTER LAN (WINDOWS)

1. Ensure the Network connection is Enabled. Go to Start — Control Panel — Network and Internet — Network and Sharing Center. Click on the **Change adapter settings** in the left panel, then right-click on Network Adapter, and select Enable.

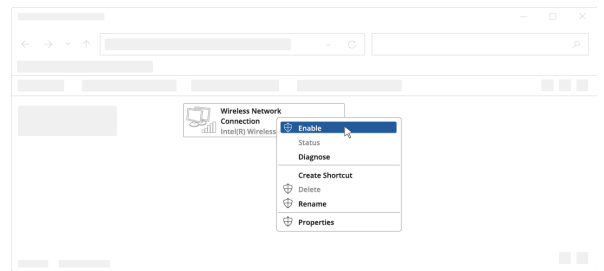


2. Check if IP and DNS are obtained automatically. Right-click on Network Adapter and select Properties. Then select **Internet Protocol Version 4** and click Properties.
3. If not selected, check to **obtain an IP address** and **obtain DNS server address automatically**. Click OK.

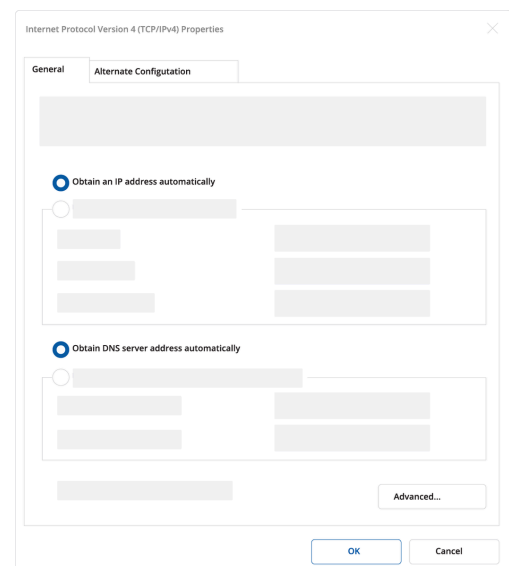


CONFIGURE YOUR COMPUTER WI-FI (WINDOWS)

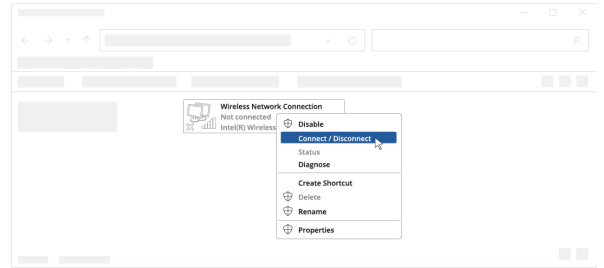
1. Ensure the Wireless network connection is Enabled. Go to Start — Control Panel — Network and Internet — Network and Sharing Center. Click on the **Change adapter settings** in the left panel, then right-click on Wireless Network Adapter, and select Enable.



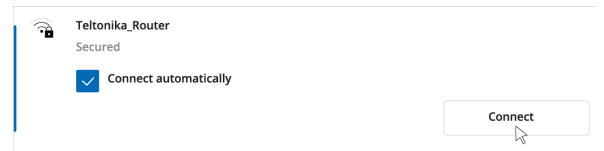
2. Check if IP and DNS are obtained automatically. Right-click on Wireless Network Adapter and select Properties. Then select **Internet Protocol Version 4** and click Properties.
3. If not selected, check to **obtain an IP address** and **obtain DNS server address automatically**. Click OK.



4. Connect to a wireless network by right-clicking on Wireless Network Adapter and selecting Connect.



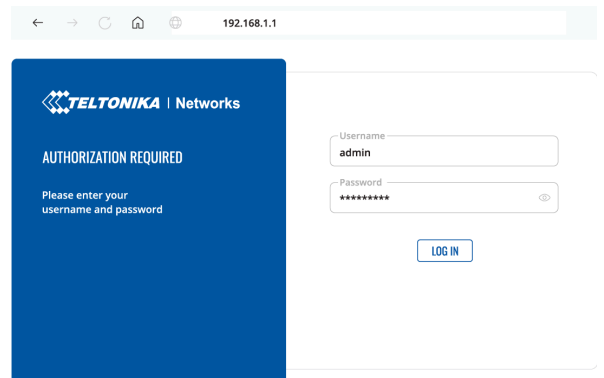
5. Choose the wireless network RUTM30 **** from the list and click Connect. Enter the Wi-Fi password located on the device's label.



LOGIN TO DEVICE

1. To enter the router's Web interface (WebUI), type <http://192.168.1.1> into the URL field of your Internet browser.

2. When prompted for authentication enter the username admin and enter the password located on the device information label/engraving.



3. After logging in, you must set a new password for security reasons. You will not be able to interact with the router's WebUI until the default password is changed. The new password must consist of a minimum of **8 characters**. Requirements: one uppercase letter, one lowercase letter, and one digit.

4. Next, the Configuration Wizard will start to help you set up some of the router's main operational parameters.

5. Finally, let's verify the Mobile signal strength. Go to the **Status — Network** page and pay attention to the **Signal Strength** indication.

To achieve the best signal conditions and maximize cellular performance, try adjusting the antennas or changing the location of your device. You can find information on signal strength recommendations [here](#).

MODEM 📶 -44 dBm

DATA CONNECTION
Connected

STATE
registered (home); LTE; 4G+ (LTE-A)

SIM CARD INFO
SIM 1 Ready

BYTES RECEIVED / SENT
42.6 MB / 2.5 MB

COMPLIANCE

RUTM30 router must be used in compliance with any and all applicable national and international laws and with any special restrictions regulating the utilization of the communication module in prescribed applications and environments.

CE DECLARATION OF CONFORMITY

[BG] Bulgarian	С настоящото TELTONIKA NETWORKS декларира, че този RUTM30 е в съответствие със съществените изисквания и други разпоредби на Директиви 2014/53/EU, 2011/65/EU, 2009/125/EC.
[HR] Croatian	Ovim TELTONIKA NETWORKS izjavljuje da je ovaj RUTM30 u skladu s bitnim zahtjevima i ostalim relevantnim odredbama Direktive 2014/53/EU, 2011/65/EU, 2009/125/EC.
[CZ] Czech	Společnost TELTONIKA NETWORKS tímto prohlašuje, že tento RUTM30 splňuje základní požadavky a další ustanovení směrnic 2014/53/EU, 2011/65/EU, 2009/125/EC.
[DK] Danish	TELTONIKA NETWORKS erklærer hermed, at denne RUTM30 er i overensstemmelse med de væsentlige krav og andre bestemmelser i direktiv 2014/53/EU, 2011/65/EU, 2009/125/EC.
[NL] Dutch	Hereby, TELTONIKA NETWORKS declares that this RUTM30 is in compliance with the essential requirements and other relevant provisions of Richtlijnen 2014/53/EU, 2011/65/EU, 2009/125/EC.

[EE] Estonian	Käesolevaga kinnitab TELTONIKA NETWORKS seadme RUTM30 vastavust Direktiivide 2014/53/EU, 2011/65/EU, 2009/125/EC põhinõuetele ja nimetatud direktiivist tulenevatele teistele asjakohastele sätetele.
[FI] Finnish	TELTONIKA NETWORKS vakuuttaa täten että RUTM30 tyyppinen laite on Direktiivien 2014/53/EU, 2011/65/EU, 2009/125/EC oleellisten vaatimusten ja sitä koskevien direktiivin muiden ehtojen mukainen.
[FR] French	TELTONIKA NETWORKS déclare par la présente que ce RUTM30 est conforme aux exigences essentielles et autres dispositions des Directives 2014/53/EU, 2011/65/EU, 2009/125/EC.
[DE] German	TELTONIKA NETWORKS erklärt hiermit, dass dieses RUTM30 den grundlegenden Anforderungen und anderen Bestimmungen der Richtlinien 2014/53/EU, 2011/65/EU, 2009/125/EC entspricht.
[GR] Greek	Η TELTONIKA NETWORKS δηλώνει ότι το παρόν RUTM30 συμμορφώνεται με τις βασικές απαιτήσεις και άλλες διατάξεις των Οδηγιών 2014/53/EU, 2011/65/EU, 2009/125/EC.
[HU] Hungarian	A TELTONIKA NETWORKS kijelenti, hogy ez a RUTM30 megfelel a 2014/53/EU, 2011/65/EU, 2009/125/EC irányelvek alapvető követelményeinek és egyéb rendelkezéseinek.
[IE] Irish	Leis seo, dearbhaíonn TELTONIKA NETWORKS go gcomhlíonann an RUTM30 seo bunriachtanais agus forálacha ábhartha eile Threoir 2014/53/EU, 2011/65/EU, 2009/125/EC.
[IT] Italian	Con la presente, TELTONIKA NETWORKS dichiara che questo RUTM30 è conforme ai requisiti essenziali e ad altre disposizioni pertinenti della Direttive 2014/53/EU, 2011/65/EU, 2009/125/EC.
[LV] Latvian	TELTONIKA NETWORKS ar šo paziņo, ka šis RUTM30 atbilst pamatprasībām un citiem Direktīvas 2014/53/EU, 2011/65/EU, 2009/125/EC noteikumiem.
[LT] Lithuanian	Šiuo dokumentu UAB TELTONIKA NETWORKS deklaruoja, kad šis RUTM30 atitinka esminius reikalavimus ir kitas 2014/53/EU, 2011/65/EU, 2009/125/EC Direktyvų nuostatas.
[MT] Maltese	TELTONIKA NETWORKS b'dan tiddikjara li dan RUTM30 jikkonforma mar-rekwiżiti essenzjali u dispożizzjonijiet oħra tad-Direttivi 2014/53/EU, 2011/65/EU, 2009/125/EC.
[NO] Norwegian	TELTONIKA NETWORKS erklærer herved at denne RUTM30 er i samsvar med de grunnleggende kravene og andre bestemmelser i Direktivene 2014/53/EU, 2011/65/EU, 2009/125/EC.
[PL] Polish	TELTONIKA NETWORKS niniejszym oświadcza, że niniejszy RUTM30 jest zgodny z zasadniczymi wymaganiami i innymi postanowieniami Dyrektyw 2014/53/EU, 2011/65/EU, 2009/125/EC.
[PT] Portuguese	A TELTONIKA NETWORKS declara que esta RUTM30 cumpre os requisitos essenciais e outras disposições das Directivas 2014/53/EU, 2011/65/EU, 2009/125/EC.
[RO] Romanian	TELTONIKA NETWORKS declară prin prezenta că acest RUTM30 este în conformitate cu cerințele esențiale și cu alte dispoziții ale Directivelor 2014/53/EU, 2011/65/EU, 2009/125/EC.
[SK] Slovak	Spoločnosť TELTONIKA NETWORKS týmto vyhlasuje, že tento RUTM30 spĺňa základné požiadavky a ďalšie ustanovenia smerníc 2014/53/EU, 2011/65/EU, 2009/125/EC.
[SI] Slovenian	TELTONIKA NETWORKS izjavlja, da je ta RUTM30 skladen z bistvenimi zahtevami in drugimi določbami Direktiv 2014/53/EU, 2011/65/EU, 2009/125/EC.

[ES] Spanish	TELTONIKA NETWORKS declara por la presente que este RUTM30 cumple los requisitos esenciales y otras disposiciones de las Directivas 2014/53/EU, 2011/65/EU, 2009/125/EC.
[SE] Swedish	TELTONIKA NETWORKS förklarar härmed att denna RUTM30 uppfyller de grundläggande kraven och andra bestämmelser i Direktiven 2014/53/EU och 2011/65/EU, 2009/125/EC.

MARKINGS

Detailed compliance information is available at the following internet address: wiki.teltonika-networks.com/view/Certificates.



This sign means that it is necessary to read the User's Manual before you start using the device.



This sign on the package means that all used electronic and electric equipment should not be mixed with general household waste.



Hereby, TELTONIKA NETWORKS declares that this RUTM30 is in compliance with the essential requirements and other relevant provisions of Directives 2014/53/EU, 2011/65/EU, 2009/125/EC. The full text of the EU Declaration of Conformity is available at the following internet address: <https://wiki.teltonika-networks.com/view/RUTM30>.



Hereby, TELTONIKA NETWORKS declares that this RUTM30 is in compliance with Radio Equipment Regulations 2017, The Restriction of the Use of Certain Hazardous Substances in Electrical and Electronic Equipment Regulations 2012, The Ecodesign for Energy-Related Products and Energy Information (Amendment) (EU Exit) Regulations 2019. The full text of the UK Declaration of Conformity is available at the following internet address: <https://wiki.teltonika-networks.com/view/RUTM30>.

In all EU member states, operation of 5150–5350 MHz is restricted to indoor use only.

RF EXPOSURE

This device meets the official requirements for exposure to radio waves. This device is designed and manufactured not to exceed the emission limits for exposure to radio frequency (RF) energy set by authorized agencies. The device must be used with a minimum separation of 20 cm from a person's body to ensure compliance with RF exposure guidelines. Failure to observe these instructions could result in your RF exposure exceeding the applicable limits.

External antennas used with RUTM30 must be installed to provide a distance of at least 20 cm from any people and must not be co-located or operated in conjunction with any other antenna or transmitter.

Any external antenna gain must meet RF exposure and maximum radiated output power limits of the applicable rule section.

OPERATING FREQUENCY / MAXIMUM TRANSMISSION POWER		
WCDMA	B1	1920-1980, 2110-2170 MHz, 25 dBm
	B5 ¹	824-849, 869-894 MHz, 25 dBm
	B8	880-915, 925-960 MHz, 25 dBm
LTE-FDD	B1	1920-1980, 2110-2170 MHz, 25 dBm
	B3	1710-1785, 1805-1880 MHz, 25 dBm
	B5 ¹	824-849, 869-894 MHz, 25 dBm
	B7	2500-2570, 2620-2690 MHz, 25 dBm
	B8	880-915, 925-960 MHz, 25 dBm
	B20	832-862, 791-821 MHz, 25 dBm
	B28	703-748, 758-803 MHz, 25 dBm
LTE-TDD	B38	2570-2620 MHz, 28 dBm
	B40	2300-2400 MHz, 28 dBm
	B41 ²	2496-2690 MHz, 28 dBm
	B42 ²	3400-3600 MHz, 28 dBm
	B43 ²	3600-3800 MHz, 28 dBm

OPERATING FREQUENCY / MAXIMUM TRANSMISSION POWER		
5G NR (SA, NSA)	n1	1920-1680, 2110-2170 MHz, 25 dBm
	n3	1710-1785, 1805-1880 MHz, 25 dBm
	n5 ¹	824-849, 869-894 MHz, 25 dBm
	n7	2500-2570, 2620-2690 MHz, 25 dBm
	n8	880-915, 925-960 MHz, 25 dBm
	n20	832-862, 791-821 MHz, 25 dBm
	n28	703-748, 758-803 MHz, 25 dBm
	n38	2570-2620 MHz, 25 dBm
	n40	2300-2400 MHz, 25 dBm
	n41	2496-2690 MHz, 28 dBm
	n77	3300-4200 MHz, 28 dBm
	n78	3300-3800 MHz, 28 dBm
Wi-Fi 2.4 GHz	2412-2472 MHz, 20 dBm	
Wi-Fi 5 GHz	UNII-1 Band 1	5180-5240 MHz, 23 dBm
	UNII-2A Band 2	5260-5320 MHz, 30 dBm
	UNII-2C Band 3	5500-5700 MHz, 30 dBm
	UNII-3 Band 4	5745-5825 MHz, 13.98 dBm

¹ – Not supported in Europe region.

² – Not supported in Europe and Oceania regions.

PRODUCT SAFETY AND USE

OPERATING CONDITIONS

- Operating temperature: -40° to +75° Celsius
- Humidity should be in the range of 10% to 90% (non-condensing). Only use the device in dry environments.
- Out of direct sunlight
- Away from heat source, corrosive substances, salts, and flammable gases

Attention: operation outside the permissible range can considerably shorten the service life of the device.

FAULTY AND DAMAGED PRODUCTS

- Do not attempt to disassemble the device or its accessories.
- Only qualified personnel must service or repair the device or its accessories.
- If your device or its accessories have been submerged in water punctured or subjected to a severe fall, do not use until they have been checked at an authorized service center.

ELECTRICAL SAFETY

- Only use approved accessories.
- Do not connect with incompatible products or accessories.
- It is recommended to ground devices with grounding terminals before connecting them to power. Failure to ground appropriately might result in a shock hazard. The cross-sectional area of the protective grounding conductor should be at least 1mm².

PRODUCT HANDLING

- You alone are responsible for how you use your device and any consequences related to its use.
- Use of your device is subject to safety measures designed to protect users and their environment.
- Always treat your device and its accessories with care and keep it in a clean and dust-free place.
- Do not expose your device or its accessories to open flames or lit tobacco products, liquid, moisture, or high humidity.
- Do not drop, throw or try to bend your device or its accessories.
- Do not use harsh chemicals, cleaning solvents, or aerosols to clean the device or its accessories.
- Do not paint your device or its accessories.
- Do not attempt to disassemble your device (exemptions for devices that require disassembly for SIM insertion) or its accessories: it does not contain any user-serviceable parts. For safety reasons, the equipment should be opened only by qualified personnel.
- Make sure to use ESD personal protective equipment while the equipment is serviced.
- Do not use your device in an enclosed environment where heat dissipation is poor.
- Prolonged use in such space may cause excessive heat and raise ambient temperature, which will lead to the automatic shutdown of your device or the disconnection of the mobile network connection for your safety. To use your device again after such a shutdown, cool it in a well-ventilated place before turning it on.
- Please check all national laws and local regulations for the disposal of electronic products.
- Do not operate the device where ventilation is restricted.
- Do not use or install this product near water to avoid fire or shock hazards.
- Avoid exposing the equipment to rain or damp areas.

- Arrange power and Ethernet cables so that they are not likely to be stepped on or have items placed on them.
- Ensure that the voltage and the rated current of the power source match the device's requirements. Do not connect the device to an inappropriate power source.
- During a thunderstorm, no operations should be carried out on the device and cables.
- The unit must be powered off where blasting is in progress and explosive atmospheres are present or near medical life support equipment.
- Do not leave your device and its accessories within reach of small children or allow them to play with it. They could hurt themselves or others and could accidentally damage the device. Your device contains small parts with sharp edges that may cause an injury choking hazard.
- Like any wireless device, this device operates using radio signals, which cannot guarantee connection in all conditions. Therefore, you must never rely solely on any wireless device for emergency communications or otherwise use the device in situations where the interruption of data connectivity could lead to death, personal injury, property damage, data, or other loss.
- The device may become warm during regular use.